

Quick Installation Guide for netCAMit

1. netCAMit packing list :

Before you start installing netCAMit, please verify that the package contains the following items:

- One Set of netCAMit IP Camera
- 1x RJ45 Network Cable
- 1x Power Adapter
- CD with Setup Software, User's Manual and this Quick Installation Guide
- Desktop / Wall & Ceiling Mount Strut



NOTE: Please notify your sales representative immediately if any items listed above is missing or damaged.

2. Connecting the netCAMit to your existing router

- 1) Connect netCAMit to Ethernet port of your existing router using the RJ45 cable.
- 2) Connect the power cable to RJ22 jack of the netCAMit.
- 3) Insert CD to your PC connecting to the same router to install eCAMit Deluxe AP.
(Please refer to section 2.)
- 4) Execute eCAMit Deluxe AP, the camera will automatically show up on Camera List.
- 5) Double click the camera to view.
- 6) Personalize your camera:

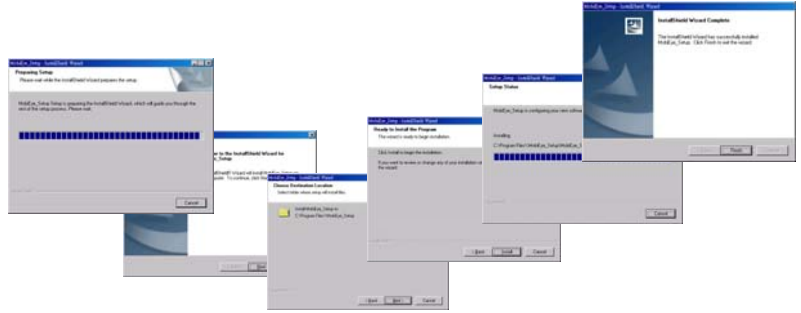
Move the mouse to the camera and click on the right button to set:

1. Public Password (Default is blank. Keep it blank if you would like the camera to be open to the public.)
2. Supervisor Password (Default is blank. It is suggested to set this level of password.)
3. Camera Name (Default is "my camera".)



3. Install the eCAMit Deluxe Software

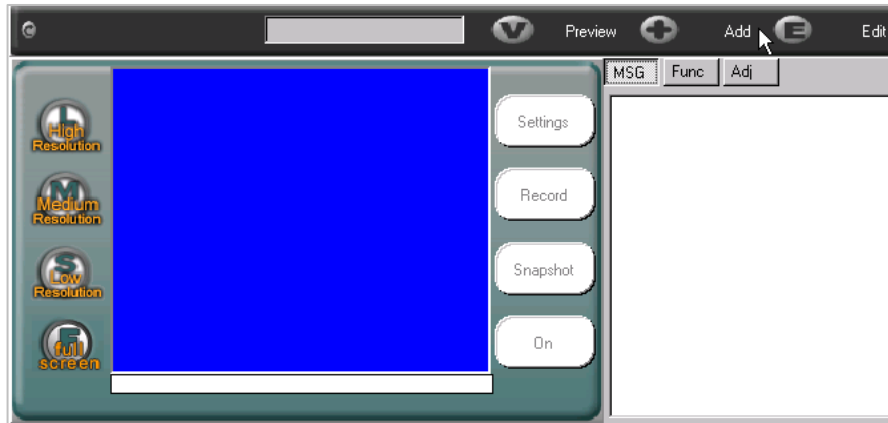
- 1) Insert CD and install eCAMit Deluxe to your PC or download the AP from: <http://www.3jtech.com/downloads.htm> for T series IP cameras. For CD installation, please click on Install "eCAMit Deluxe" and follow the wizard. For Internet downloaded software, please unzip the files, and execute file **Setup.exe** and follow the wizard.



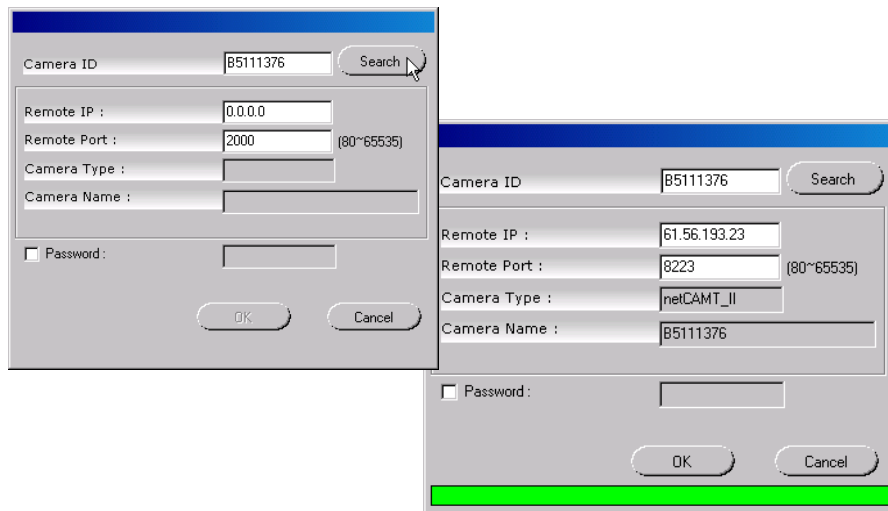
 **NOTE:** If you have eCAMit Deluxe already on your PC, you do not need to install the software again.

■ View Camera via eCAMit Deluxe

- 1) To view the camera, please start **eCAMit Deluxe** software. It can be found on Start Menu.
- 2) Select the language you would like, then, the camera in the local LAN will be displayed automatically on Camera List. You also can click on **"Add"** function if your camera fails to appear.



- 3) When the add window appears, please enter the camera ID. (Camera ID can be found on the back of your netCAMit unit.) Click on **"Search"** when done, if your camera is online, the details should appear automatically. Click **"OK"** to add this camera searched to Camera List.



- 4) Double click on the entry belonging to the camera you would like to view.

